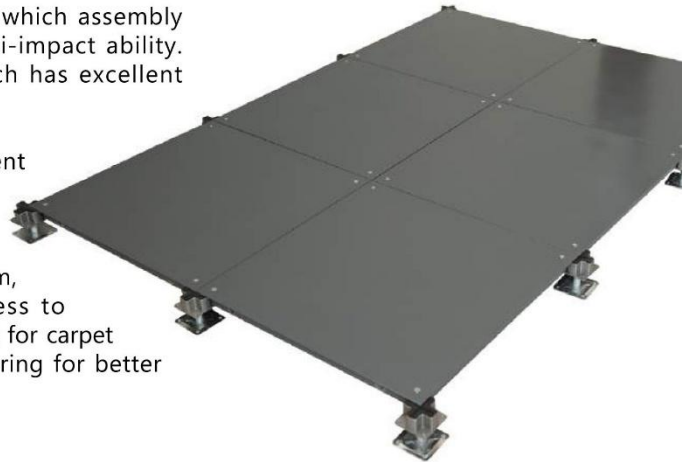


“ARTOMAT” RAISED FLOOR SYSTEM

Bare Panel and Specification

Bare Panel is made up of excellent steel of which assembly structure with high strength and strong anti-impact ability. Surface is treated with epoxy coating, which has excellent mechanical and electrical insulating properties.

Bare panel is easy to mount and has excellent wearing resistance. These panels are widely used for raised flooring in many buildings, meeting rooms, hotels, dust-proof and water-proof area. Having this raised flooring system, wiring can be embedded and instant access to wiring and cabling is also provided. It is perfect for carpet applications and any other hard surface covering for better appearance.



Surface



Bottom

Specifiactions

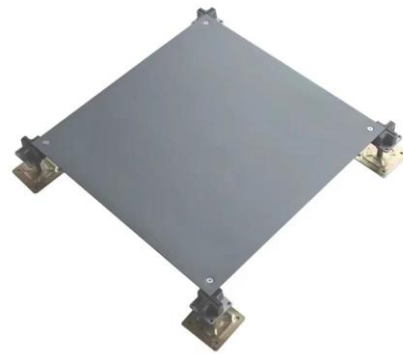
Panel Size:	600x600mm
Panel in-fill:	Cementitious
Construction:	Cornerlock system
Floor to floor height:	40-600mm
Thickness:	33mm
System weight:	38kg/m ²
Rolling loading:	2.95kN
Concentrated loading:	3.60kN
Uniform loading:	16.50kN/m ²
Traffic:	Medium to heavy applications
Flammability test:	Pass
Loading test:	Pass
Dimensional stability:	Pass

“ARTOMAT” RAISED FLOOR SYSTEM

Bare Panel & Conner Lock



Surface & bottom of panel, size 600 x 600mm



Install of cross head pedestals

Installation Image & Project Reference



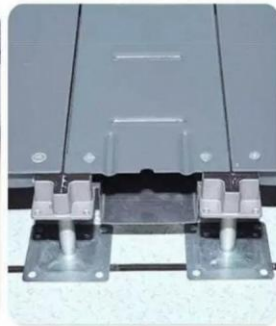
Installation Image



O.PARK 1 (Organic Resources Recovery)

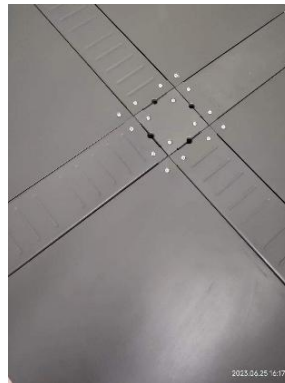
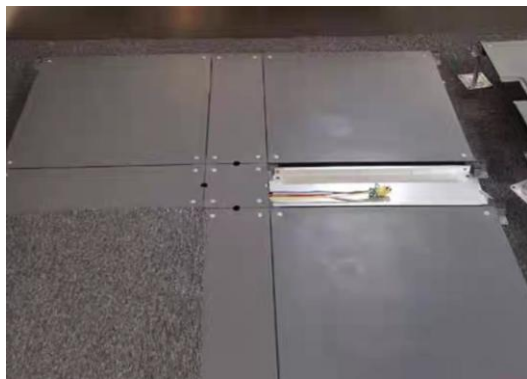
“ARTOMAT” RAISED FLOOR SYSTEM

Accessories - Trucking & Cover Panel



Bare panel, trucking and cover panel

size 150(W) x 600(L)mm



Bare panel, trucking, joint and cover panel



Trunking with cross head pedestal, system height +/- 40mm

“ARTOMAT” NON-COMBUSTIBLE STEEL PEDESTAL SYSTEM

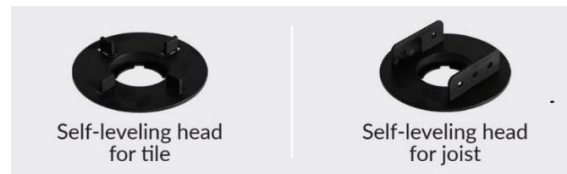


Advantage

- Reach A1/A2 fire rating
- Experiments have proved to with-stand the weight of 2 tons.
- Self-leveling head for slopes from 0 to 5%.
- Complete assembled product, save labor.
- Coated with protective layer
- Height adjustment key
- With fix collar lock accessory
- Transport costs considerably reduced as the product is supplied assembled

TECHNICAL DATA SHEET

Self - leveling Steel Pedestal



** Series for Tile and Decking with self – leveling function **

Flat head Steel Pedestal



** Series for Tile **



** Series for decking with aluminium joist **

Accessories - Flat head Steel Pedestal



Aluminium spacer tab to support paver tile
spacer tab thickness: 2mm / 3mm / 4mm / 5mm

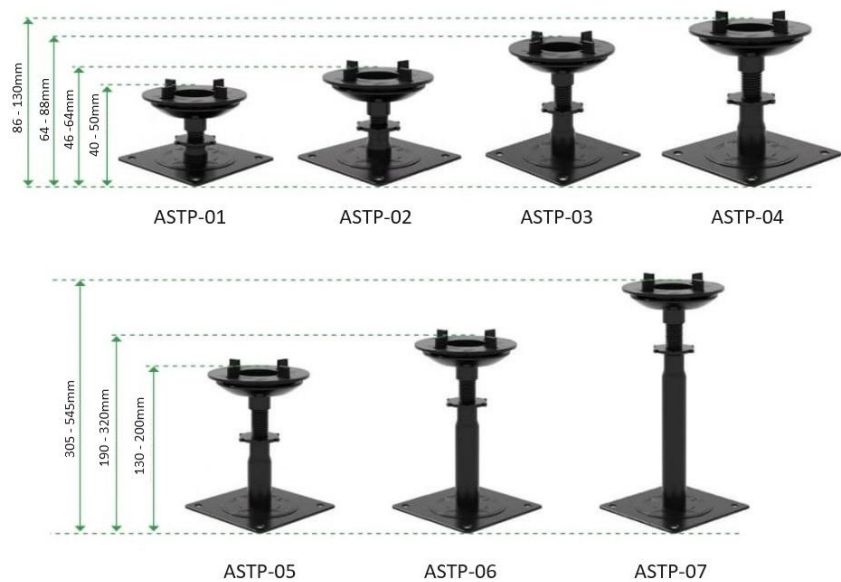


Joist cradle to fix joist beam paver
size 50(W) x 18(H)mm

TECHNICAL DATA SHEET

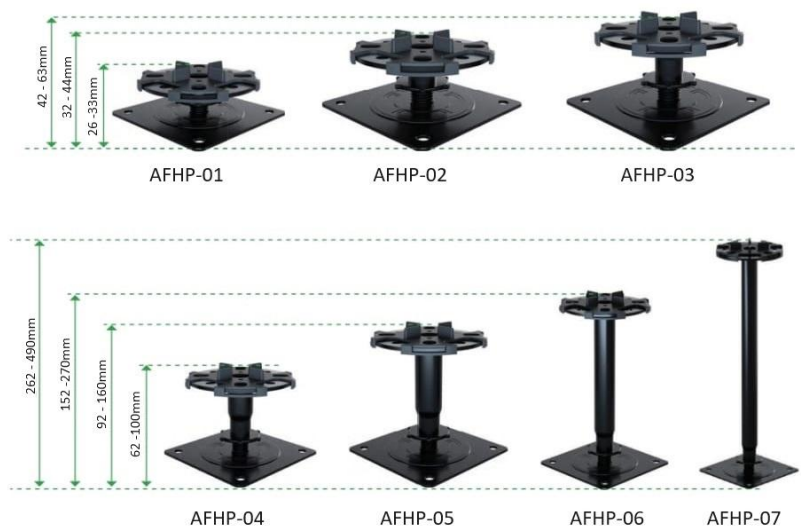
Code and Height Range

For self - leveling steel pedestal



Range height from 40mm to 545mm and customizable height as required.

For flat head steel pedestal



Range height from 26mm to 490mm and customizable height as required.

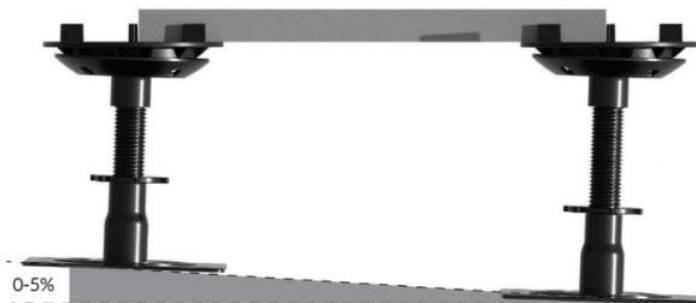
INSTALLATION

Automatic Self - leveling

For self - leveling steel pedestal only



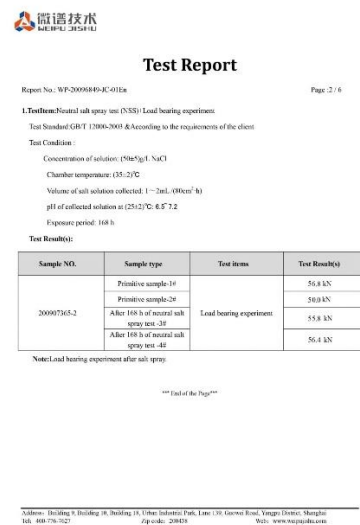
Self-leveling head Dia. 90mm
Allowing to get a perfect flat
pavement even on rough floor.



Welcome to contact us to advise the qty. of pedestal when using tile & decking.
We suggest that buy 10% waste allowance of total quantity as well.

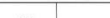


Certificate and Test Report



Loading Test: 56.8 kN

GB/T 12000-2003

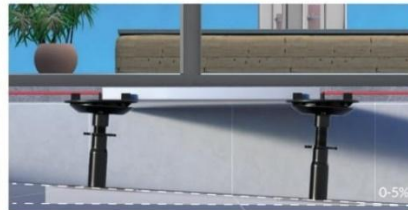
		
序号	3	
核算项目名称	燃烧性能	
	GB 50222-2001《建筑内部装修设计防火规范》 B1级 $\geq 0.45 \text{ W/m}^2$ B2级 $\geq 0.22 \text{ W/m}^2$ B3级 $< 0.22 \text{ W/m}^2$ 难燃材料 可燃材料 易燃材料	
标准要求	GB 8624-2012《建筑材料及制品燃烧性能分级》 不燃材料 A1级、难燃材料 A2级、金属类、无机绝热材料、玻璃棉、岩棉板、天然石材、石膏板、陶质砖等	
	S27(1236-2003)《防静电地板使用验收规范》 FV-0级 $S\leq 10^8$ 防静电	
实测结果	不燃 A1级	贴面
	28.8% FV-I级	
结论	符合	

GB 50222-2001 建築內部防火測試

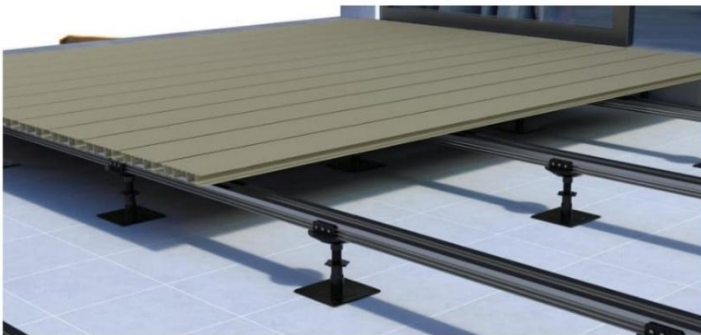
中国认可
国际互认
检测
TESTING
CNAS L4743

PRODUCTS IMAGE

Automatic Self - leveling



Slope compensation detail using self-leveling pedestal fixed with tile and paver.



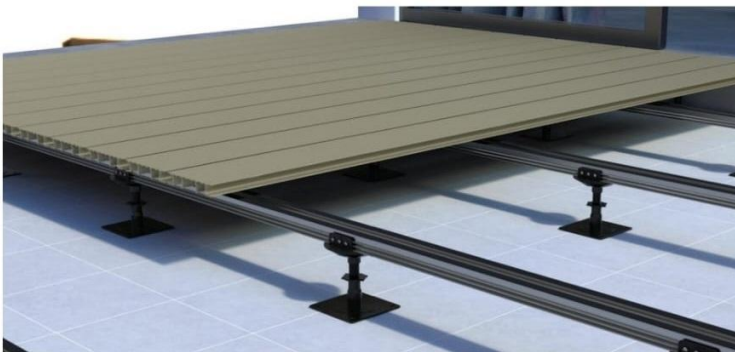
Slope compensation detail using self-leveling pedestal series fixed with aluminium joist.

PRODUCTS IMAGE

Flat head Steel Pedestal



Adjust the height using flat head pedestal series fixed with tile and paver.



Adjust the height using flat head pedestal series fixed with aluminium joist.

PRODUCTS IMAGE

Automatic Self - leveling



Self-leveling pedestal with joist cradle

Model: ASTP-03



Aluminium joist, size: 50x25mm

Model: AJ50x25

Flat head Steel Pedestal



Flat head pedestal with joist cradle

Model: AFHP-03



Aluminium joist, size: 50x25mm

Model: AJ50x25

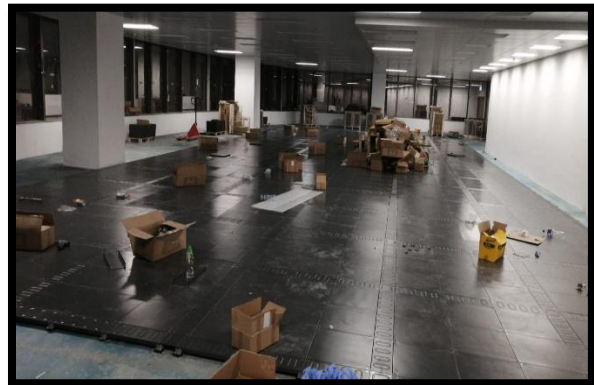
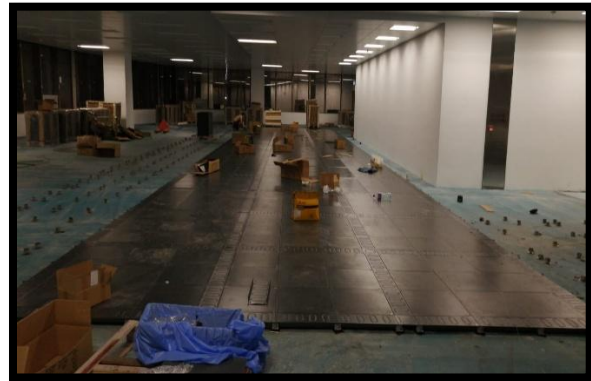
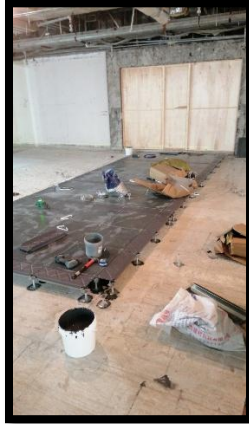
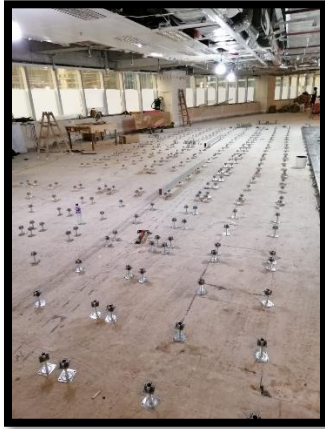
LIST OF JOB REFERENCE

Hong Kong & China Projects

1. 大嶼山小蠔灣有機資源回收中心 (香港土木工程處項目)
2. 香港中環交易廣場 (香港分銷商私人企業項目)
3. 葵涌永得利廣場 (香港分銷商私人企業項目)
4. 上環新紀元大廈 (香港分銷商私人企業項目)
5. 尖沙咀港威大廈 (香港分銷商私人企業項目)
6. 深圳中国華潤大廈
7. 深圳長城大廈
8. 深圳天健雲途
9. 廣州碧桂園
10. 佛山保利中心土木工程處
11. 上海恒生雲創
12. 上海通用電器
13. 北京中海廣場
14. 蘇州天都大廈
15. 蘇州平安銀行

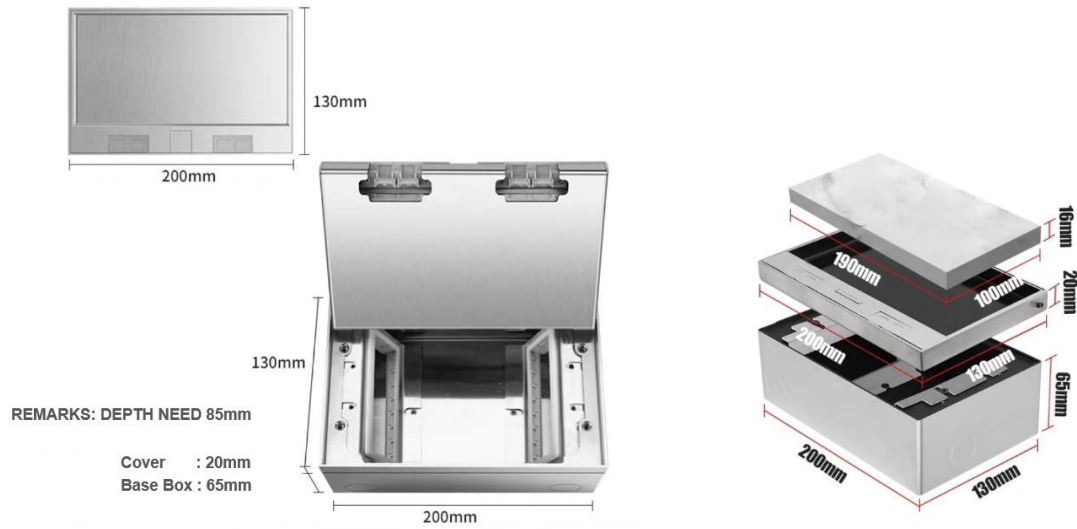
LIST OF JOB REFERENCE

Hong Kong Works In Progress Photo



ACCESSORIES

Floor Box (130 x 200 mm)

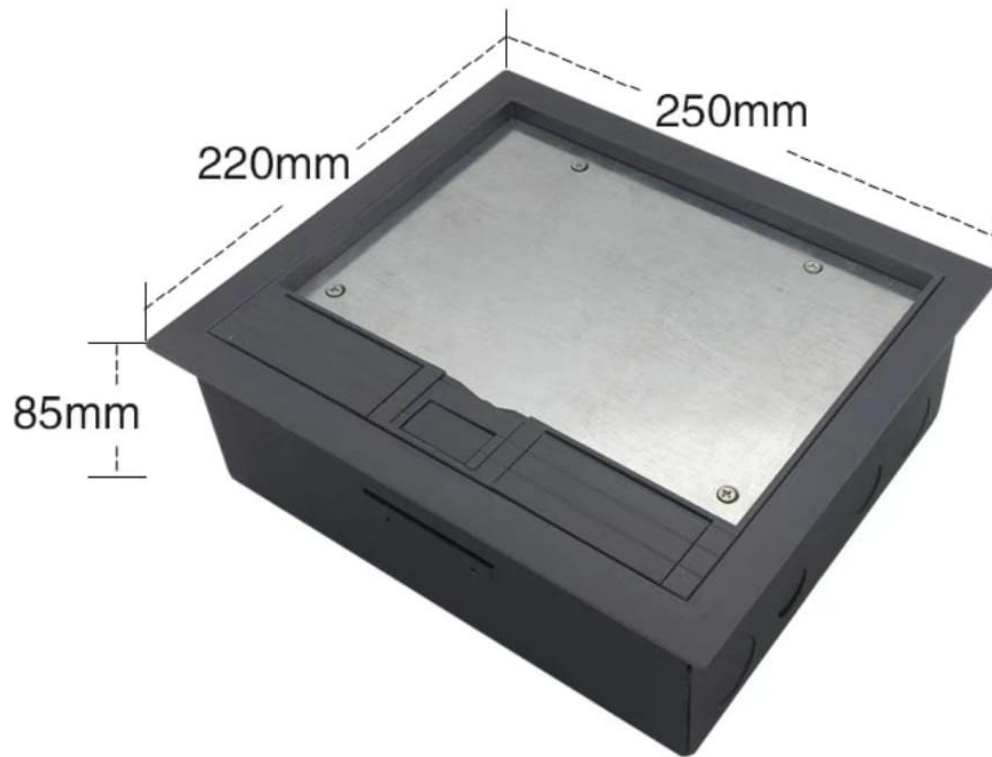


Floor Box (130 x 130 mm)



ACCESSORIES

Floor Switch Box - Lip Replacement



Model: Plastic Panel Style

Cover Panel Size: 250(W) x 220(D)mm

Bottom Box Size: 230(W) x 200(D) x 85(H)mm

Material: Cover Panel (Plastic + Metal); Box (Metal)



ACCESSORIES

Floor Switch Box - Lip Replacement



Floor Switch Boxes - Lip Replacement

Bottom Box Size: 230(W) x 200 (D) x 85(H)mm

Cover Size (Plastic + Metal): 250(W) x 220(D)mm

PRODUCTS IMAGE

Series: OA600, Model: FS800, Raised floor with trunking system



Bare Panel: size: 600x600mm



Trunking: size: 600x160mm

Item	Standard	Descripton
OA600 bare panel	600x600x35mm	800lb. Huili design 60cm steel bare panel with corner-lock holes. Panel steel is 0.7/0.7mm
Trunking	600x160mm*2.0mmT	Long cover, epoxy paint
		Long cable tray(bottom), 0.50mmT steel
	160x160mm*2.0mmT	Square cover, epoxy paint
	160x160mm	Square cable tray(bottom), 0.50mmT steel